

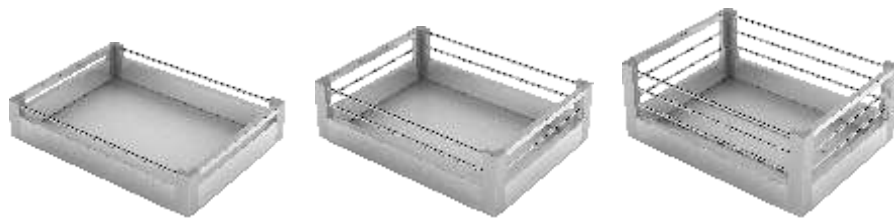


# Premium Aluminium Kitchen Baskets

A Product from ISO 9001:2008 Certified Company

in 'n' out<sup>®</sup> ALCO  
exclusive accessories

Plain Basket



**WIDTH** 203 | 304 | 381 | 431 | 482 | 533 | 610 | 686 | 813

**DEPTH** 502 | 552 | 602

**HEIGHT** 100 | 150 | 200



Partation Basket



**WIDTH** 381 | 431 | 482 | 533

**DEPTH** 502 | 552 | 602

**HEIGHT** 100 | 150 | 200



Cutlery Basket



**WIDTH** 381 | 431 | 482 | 533

**DEPTH** 502 | 552 | 602

**HEIGHT** 100



Cup & Saucer Basket



**WIDTH** 381 | 431 | 482 | 533

**DEPTH** 502 | 552 | 602

**HEIGHT** 100



Thali & Plate Basket

THALI BASKET



PLATE BASKET



- WIDTH** 381 | 431 | 482 | 533
- DEPTH** 502 | 552 | 602
- HEIGHT** PLATE - 150 | THALI - 200

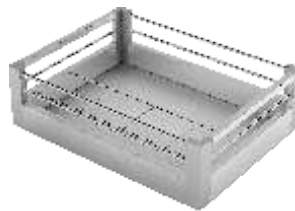


Glass Basket / Bottle Basket

GLASS BASKET



BOTTLE BASKET



- WIDTH** 381 | 431 | 482 | 533
- DEPTH** 502 | 552 | 602
- HEIGHT** GLASS - 100 | BOTTLE - 150



Double & Triple Pull Out



DOUBLE



TRIPLE

- WIDTH** 150 | 200 | 304
- DEPTH** 502
- HEIGHT** DOUBLE - 430 | TRIPLE - 530



Multipurpose Single Pull Out



- WIDTH** 113 | 163 | 213
- DEPTH** 502
- HEIGHT** 610

\*Only for Telescopic Slider

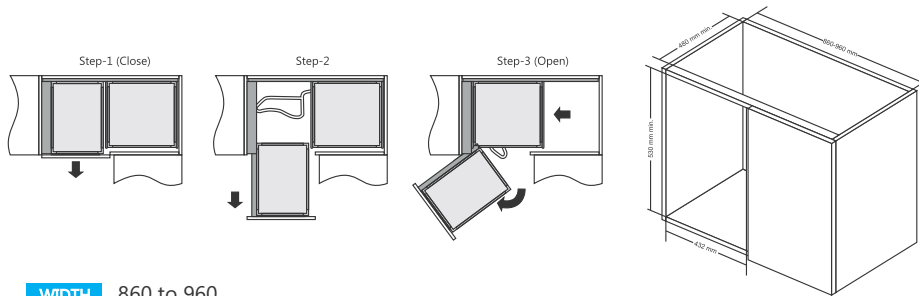


Bottle Plate Pull Out

**WIDTH** 304  
**DEPTH** 502  
**HEIGHT** 430



Magic Corner



**WIDTH** 860 to 960  
**DEPTH** 480  
**HEIGHT** 530



Tall Unit

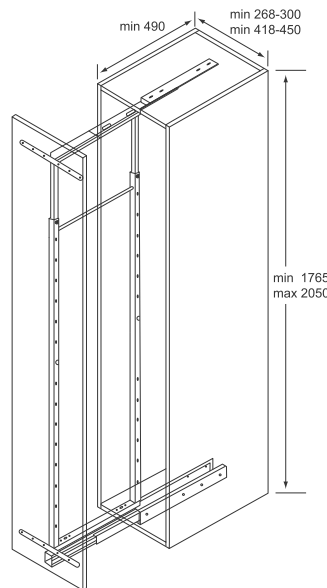
**CONTAINS :**

1. TOP RUNNER - 1 PCS.
2. BOTTOM RUNNER - 1 PCS.
3. MAIN FRAME
4. BASKETS - 6 PCS.
5. HOLDING CLAMP - 12 PCS.



BASKET 450X280X100 - 6 PCS.

**WIDTH** 418 to 450  
**DEPTH** 490  
**HEIGHT** 1765 to 2050



**MACWEL METALS PVT. LTD.**

Metoda - G.I.D.C., Dist. Rajkot, Gujarat  
 W : [www.macwel.co.in](http://www.macwel.co.in) | E : [info@macwel.co.in](mailto:info@macwel.co.in)  
 Cell : +91- 9033118855